



# Flight Plan & Site Survey

Created using **RPAS Wilco®**

Operation Name:	prince george aeromodellers
Pilot Name:	[REDACTED]
Pilot Certificate:	[REDACTED]
Flight Start:	January 28, 2023 2:06 PM
Flight End:	January 28, 2023 4:06 PM
Flight Area (Latitude):	53° 47' 11.70" N ( 53.787 )
Flight Area (Longitude):	122° 50' 57.80" W ( -122.849 )
Altitude - Radius:	Alt: 600 ft - Rad: 926.0 m ( 0.5 nm)
Airspace:	UNCONTROLLED
FIR - Contact:	CZVR - 604-586-4500
Weather:	-12.8 Celsius - Clear

Please ensure you received all required authorizations prior to flight.

## Disclaimer

This Site Survey was created using RPAS Wilco by AIM Robotics. The flight plan contained is intended only for RPAS flights on the date/time and location specified. The user accepts all responsibility for the accuracy and completeness of the information contained.

For the complete Terms & Conditions, see

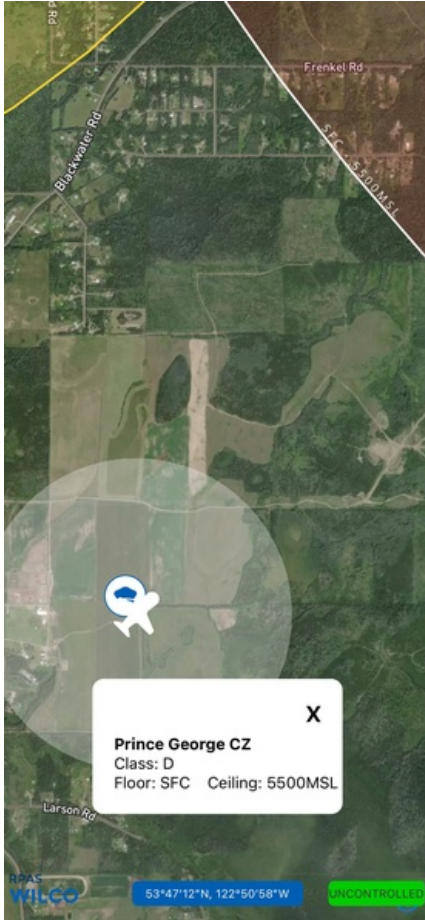
<https://rpaswilco.com/#/tnc>

## Included



- Site Survey
- Obstacles (if available)
- Nearby Aerodromes
- Canadian Aviation Regulations
- GFA
- Aerodrome Supplements
  - METAR & TAF (if available)
  - NOTAMs
  - CFS



## Flight Map

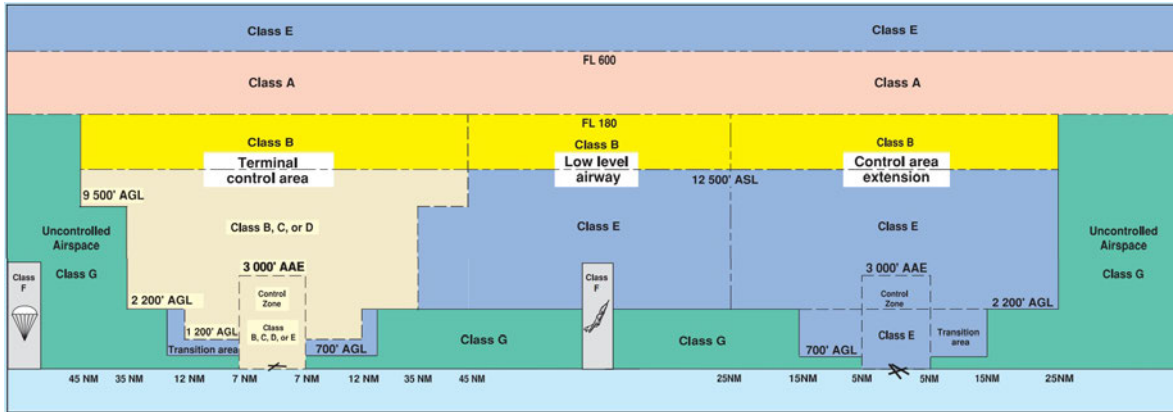


## MAP Details

	Latitude	Longitude
 <b>MODEL</b>	53° 47' 11.70" N ( 53.787 )	122° 50' 57.80" W ( -122.849 )
 <b>Pilot</b>	53° 47' 15.30" N ( 53.7876 )	122° 51' 1.40" W ( -122.8504 )



## Airspace Classification



## Overlying Airspaces

Class	Name	Floor	Ceiling
B	Prince George, BC TA	12500MSL	18000MSL
E	Prince George, BC TA	700AGL	12500MSL
E	Prince George, BC CAE	5200MSL	12500MSL
B	Prince George, BC CAE	12500MSL	18000MSL
B	Prince George, BC CAE	12500MSL	18000MSL
E	Prince George XPNDR MANDTRY	5200MSL	12500MSL

## Nearest Aerodromes & Distance from Operation

BEAVERLEY (CBA8 AERODROME Reg)	Lat: 53.856	Long: 122.907	8.595 KM	4.64 NM
PRINCE GEORGE (CYXS AERODROME Cert)	Lat: 53.884	Long: 122.678	15.614 KM	8.43 NM

## Weather Information for Mission Day

Summary: Clear conditions throughout the day.

Condition	Temperature	Feels Like	Precipitation	Visibility	Cloud Coverage	Wind Speed	Humidity
Clear	12.8 Celsius	21.4 Celsius	0.0 %	15.2 Km	10.3 %	34.8 kph	61.1 %

# Canadian Aviation Regulations

## Division III — General Operating and Flight Rules

For full listing please visit <https://laws-lois.justice.gc.ca/eng/regulations/SOR-96-433/FullText.html#s-901.27>

### Visual Line-of-sight

- **901.11 (1)** Subject to subsection (2) no pilot shall operate a remotely piloted aircraft system unless the pilot or a visual observer has the aircraft in visual line-of-sight at all times during flight.
- **(2)** A pilot may operate a remotely piloted aircraft system without the pilot or a visual observer having the aircraft in visual line-of-sight if the operation is conducted in accordance with a special flight operations certificate — RPAS issued under section 903.03.

### Procedures

- **901.23 (1)** No pilot shall operate a remotely piloted aircraft system unless the following procedures are established:
  - **(a)** normal operating procedures, including pre-flight, take-off, launch, approach, landing and recovery procedures; and
  - **(b)** emergency procedures, including with respect to
    - **(i)** a control station failure,
    - **(ii)** an equipment failure,
    - **(iii)** a failure of the remotely piloted aircraft,
    - **(iv)** a loss of the command and control link,
    - **(v)** a fly-away, and
    - **(vi)** flight termination.
- **(2)** If the manufacturer of the remotely piloted aircraft system provides instructions with respect to the topics referred to in paragraphs (1)(a) and (b), the procedures established under subsection (1) shall reflect those instructions.
- **(3)** No pilot shall conduct the take-off or launch of a remotely piloted aircraft unless the procedures referred to in subsection (1) are reviewed before the flight by, and are immediately available to, each crew member.
- **(4)** No pilot shall operate a remotely piloted aircraft system unless the operation is conducted in accordance with the procedures referred to in subsection (1).

### Site Survey

**901.27** No pilot shall operate a remotely piloted aircraft system unless, before commencing operations, they determine that the site for take-off, launch, landing or recovery is suitable for the proposed operation by conducting a site survey that takes into account the following factors:

- **(a)** the boundaries of the area of operation;
- **(b)** the type of airspace and the applicable regulatory requirements;
- **(c)** the altitudes and routes to be used on the approach to and departure from the area of operation;
- **(d)** the proximity of manned aircraft operations;
- **(e)** the proximity of aerodromes, airports and heliports;
- **(f)** the location and height of obstacles, including wires, masts, buildings, cell phone towers and wind turbines;
- **(g)** the predominant weather and environmental conditions for the area of operation; and
- **(h)** the horizontal distances from persons not involved in the operation.

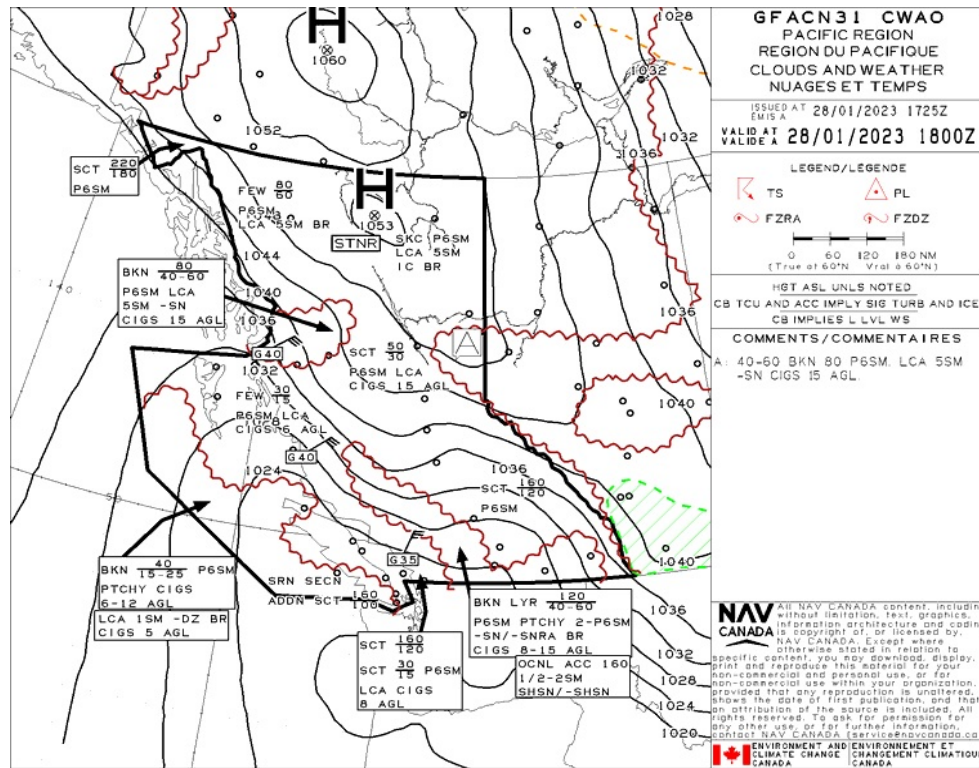
### Operations at or in the Vicinity of an Aerodrome, Airport or Heliport

- **901.47 (1)** No pilot shall operate a remotely piloted aircraft at or near an aerodrome that is listed in the *Canada Flight Supplement* or the *Water Aerodrome Supplement* in a manner that could interfere with an aircraft operating in the established traffic pattern.
- **(2)** Subject to section 901.73 no pilot shall operate a remotely piloted aircraft at a distance of less than
  - **(a)** three nautical miles from the centre of an airport; and
  - **(b)** one nautical mile from the centre of a heliport.
- **(3)** No pilot shall operate a remotely piloted aircraft at a distance of less than three nautical miles from the centre of an aerodrome operated under the authority of the Minister of National Defence unless the operation is conducted in accordance with a special flight operations certificate — RPAS issued under section 903.03.

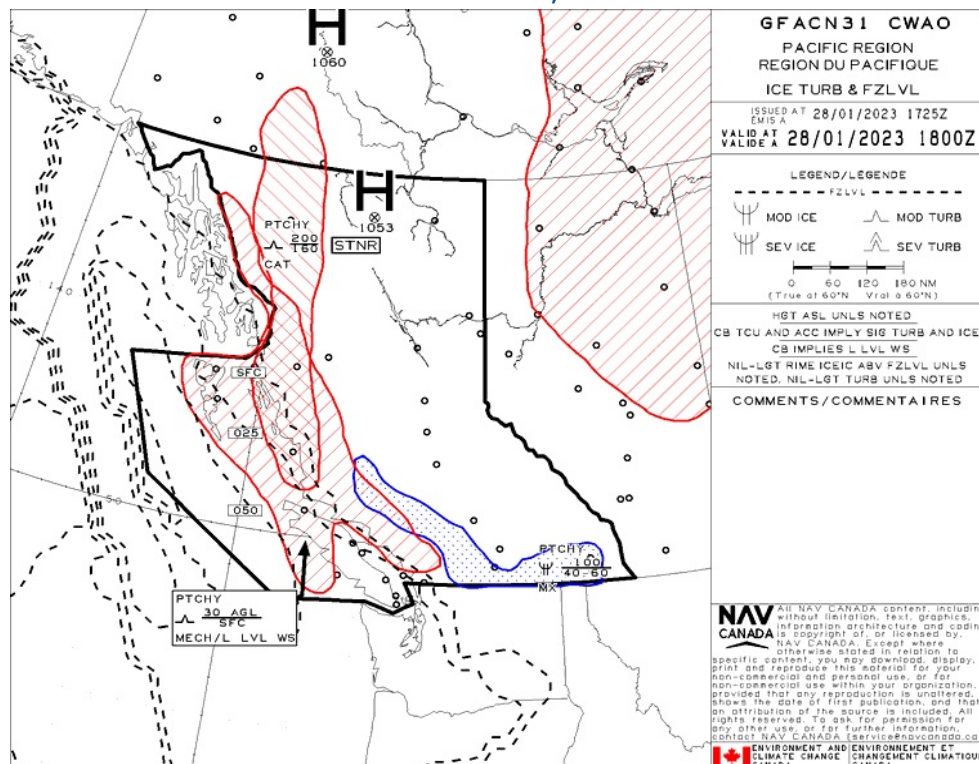
### Records

- **901.48 (1)** Every owner of a remotely piloted aircraft system shall keep the following records:
  - **(a)** a record containing the names of the pilots and other crew members who are involved in each flight and, in respect of the system, the time of each flight or series of flights and
  - **(b)** a record containing the particulars of any mandatory action and any other maintenance action, modification or repair performed on the system, including
    - **(i)** the names of the persons who performed them,
    - **(ii)** the dates they were undertaken,
    - **(iii)** in the case of a modification, the manufacturer, model and a description of the part or equipment installed to modify the system, and
    - **(iv)** if applicable any instructions provided to complete the work.
- **(2)** Every owner of a remotely piloted aircraft system shall ensure that the records referred to in subsection (1) are made available to the Minister on request and are retained for a period of
  - **(a)** in the case of the records referred to in paragraph (1)(a), 12 months after the day on which they are created; and
  - **(b)** in the case of the records referred to in paragraph (1)(b), 24 months after the day on which they are created.
- **(3)** Every owner of a remotely piloted aircraft system who transfers ownership of the system to another person shall, at the time of transfer, also deliver to that person all of the records referred to in paragraph (1)(b).

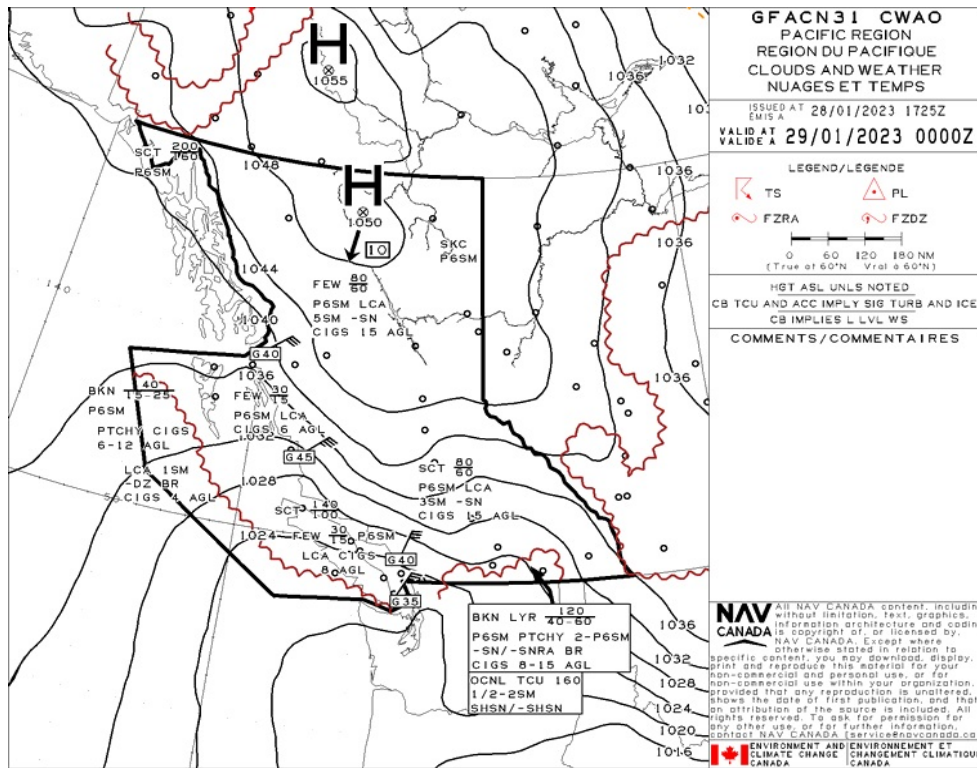
## GFA Issue time + 00 hr - CLOUDS AND WEATHER



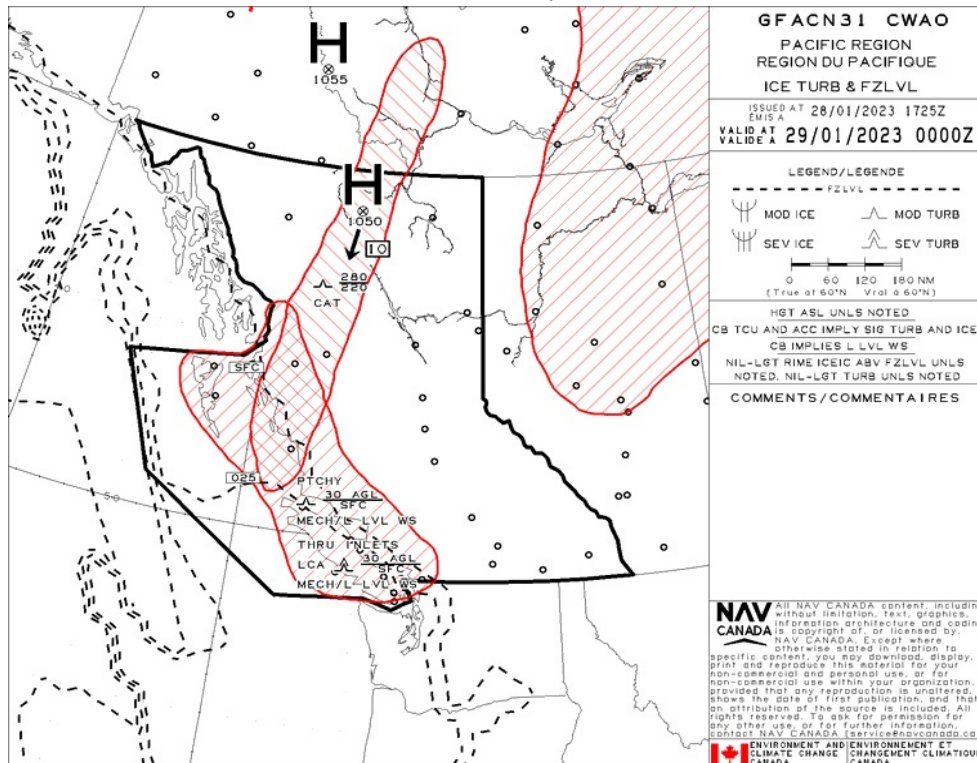
## GFA Issue time + 00 hr - TURBULENCE, ICING AND FREEZING LEVEL



## GFA Issue time + 06 hr - CLOUDS AND WEATHER

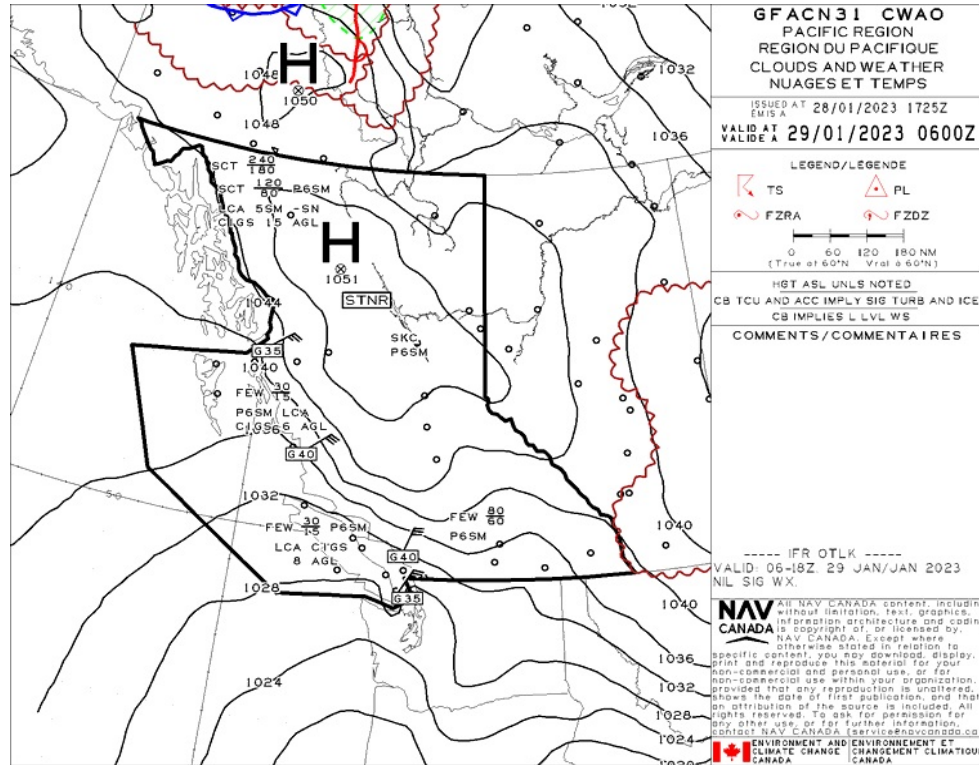


## GFA Issue time + 06 hr - TURBULENCE, ICING AND FREEZING LEVEL

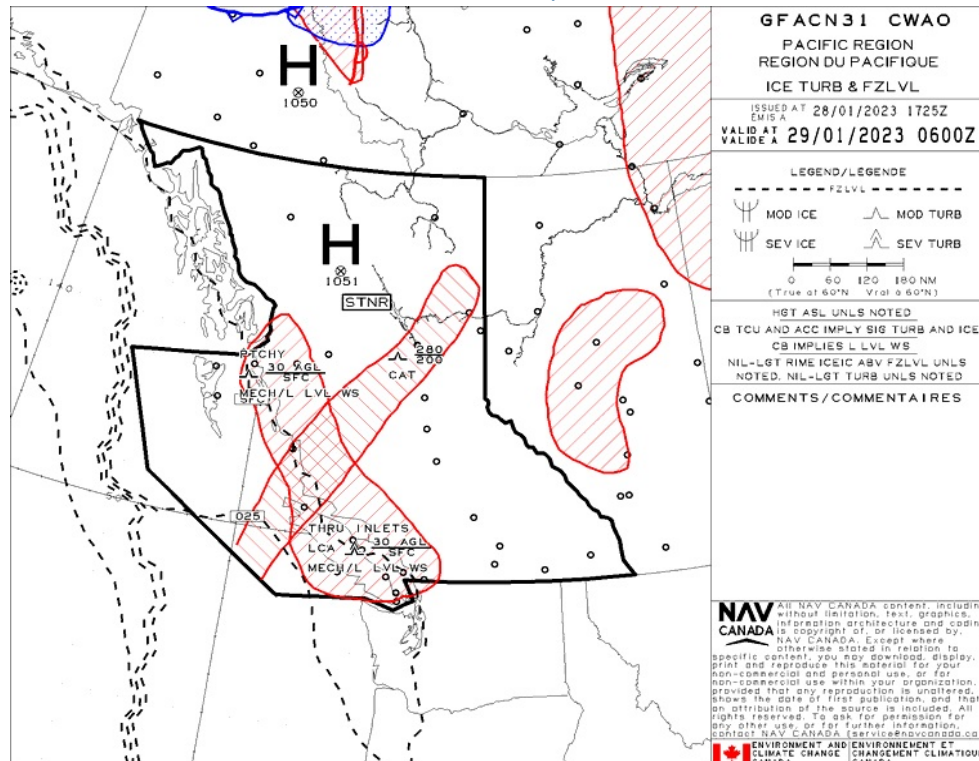




## GFA Issue time + 12 hr - CLOUDS AND WEATHER



## GFA Issue time + 12 hr - TURBULENCE, ICING AND FREEZING LEVEL



## BEAVERLEY - CBA8 - Reg

### NOTAM

(F0218/23 NOTAMN  
Q) CZVR/QCDAS/IV/NB0/E/000/999/5205N12506W999  
A) CZVR B) 2301290430 C) 2301290800  
E) CPD C NOT AVB )

(F3992/22 NOTAMN  
Q) CZVR/QAT T/IV/NB0/E/000/999/4912N12311W999  
A) CZVR B) 2212081954 C) 2302081900EST  
E) IN SUPPORT OF CYVR CA FOR RE EASE PROGRAM:  
IFR ACFT DEP CYCD CYAZ CYXX CZBB CYHC CYPK CYWH CYNJ CAP3 CYB  
CYZT CYKA CY W AND CYF DESTINED FOR CYVR ARE REQUIRED TO CTC  
TWR, FSS OR FIC BTN 30-90 MIN PRIOR TO DEP FOR AN APPROVED DEP  
TIME.  
IFR ACFT DEP CYYJ, CTC C EARNANCE DE IVERY ON FREQ 126.4MHZ BTN  
30-90 MIN PRIOR TO DEP FOR AN APPROVED DEP TIME.  
IFR ACFT DEP CYQQ CYPW AND CAT4 DESTINED FOR CYVR ARE REQUIRED TO  
CTC CYQQ TERMINA 250-339-8115 BTN 30 AND 90 MIN PRIOR TO DEP FOR  
AN APPROVED DEP TIME.)

(F0099/23 NOTAMR F3468/22  
Q) CZXX/QOCH/IV/NB0/E/000/999/5205N12506W999  
A) CZVR CZEG B) 2301111839 C) 2304121800EST  
E) A ACFT, REGARD ESS OF THE STATE OF REGISTRY, DIRECT Y OR  
INDIRECT Y OWNED, CHARTERED, EASED, OPERATED OR OTHERWISE  
CONTROLLED BY A PERSON CONNECTED WITH EITHER THE RUSSIAN  
FEDERATION OR OF BE ARUS OR BY A CORPORATION OR ENTITY THAT IS  
INCORPORATED OR FORMED UNDER THE LAWS OF THE RUSSIAN FEDERATION  
OR BE ARUS, AND A OPERATORS HOLDING AN AIR OPERATOR CERTIFICATE  
(AOC) ISSUED BY RUSSIAN FEDERATION AND/OR BE ARUSIAN AUTHORITIES  
ARE PROHIBITED TO ENTER, EXIT OR OVERFLY CANADA'S TERRITORIA  
AIRSPACE (INCLUDING F T WITHIN 12NM OF CANADA'S COASTS).  
EXCEPTIONS PERMITTED FOR ACFT EXPERIENCING IMMINENT EMERG.

A AUTH OBTAINED PRIOR TO 27 FEB 2022 FOR ACFT AND OPS SUBJECT  
TO THIS NOTAM ARE REVOKED.

HUMANITARIAN, SAR, MEDEVAC AND ANY OTHER F T SEEKING AN EXCEPTION  
TO THIS RESTRICTION MUST RECEIVE AUTH GRANTED AFTER 27 FEB 2022  
FM THE MINISTER OF TRANSPORT TO OPERATE IN CANADA'S TERRITORIA  
AIRSPACE. AFFECTED ACFT WISHING TO OBTAIN SUCH AN AUTH OR C R  
INTO CANADA'S TERRITORIA AIRSPACE MAY APPLY TO THE MINISTER OF  
TRANSPORT AT 1-877-992-6853 OR 1-613-992-6853 OR BY EMAIL AT  
OPERATIONS.AVIATION(AT)TC.GC.CA.)

## PRINCE GEORGE - CYXS - Cert

### METAR

METAR CYXS 281900Z AUTO 01013G18KT 9SM CLR M13/M22 A3060 RMK SLP420=

<b>METAR</b>	<b>LOCATION</b> CYXS - PRINCE GEORGE/BC	<b>DATE - TIME</b> 28 JANUARY 2023 - 1900 UTC
<b>WIND</b> 10 TRUE @ 13 KNOTS <b>GUSTS</b> 18 KNOTS	<b>VISIBILITY</b> 9 STAT. MILES	<b>RUNWAY VISUAL RANGE</b>
<b>WEATHER</b>	<b>CLOUDINESS</b> CLEAR SKY	<b>TEMP / DEWPOINT</b> -13 C / -22 C
<b>ALTIMETER</b> 30.60 IN HG	<b>RECENT WEATHER</b>	<b>WIND SHEAR</b>

METAR CYXS 281800Z AUTO 01015G21KT 9SM CLR M14/M22 A3059 RMK SLP413=

<b>METAR</b>	<b>LOCATION</b> CYXS - PRINCE GEORGE/BC	<b>DATE - TIME</b> 28 JANUARY 2023 - 1800 UTC
<b>WIND</b> 10 TRUE @ 15 KNOTS <b>GUSTS</b> 21 KNOTS	<b>VISIBILITY</b> 9 STAT. MILES	<b>RUNWAY VISUAL RANGE</b>
<b>WEATHER</b>	<b>CLOUDINESS</b> CLEAR SKY	<b>TEMP / DEWPOINT</b> -14 C / -22 C
<b>ALTIMETER</b> 30.59 IN HG	<b>RECENT WEATHER</b>	<b>WIND SHEAR</b>

METAR CYXS 281700Z AUTO 01016KT 9SM CLR M14/M22 A3056 RMK SLP405=

<b>METAR</b>	<b>LOCATION</b> CYXS - PRINCE GEORGE/BC	<b>DATE - TIME</b> 28 JANUARY 2023 - 1700 UTC
<b>WIND</b> 10 TRUE @ 16 KNOTS	<b>VISIBILITY</b> 9 STAT. MILES	<b>RUNWAY VISUAL RANGE</b>
<b>WEATHER</b>	<b>CLOUDINESS</b> CLEAR SKY	<b>TEMP / DEWPOINT</b> -14 C / -22 C
<b>ALTIMETER</b> 30.56 IN HG	<b>RECENT WEATHER</b>	<b>WIND SHEAR</b>

# NOTAM

(F0218/23 NOTAMN  
Q) CZVR/QCDAS/IV/B0/E/000/999/5205N12506W999  
A) CZVR B) 2301290430 C) 2301290800  
E) CPD C NOT AVB )

(F0099/23 NOTAMR F3468/22  
Q) CZXX/QOEC/IV/NB0/E/000/999/5205N12506W999  
A) CZVR CZEG B) 2301111839 C) 2304121800EST  
E) A ACFT, REGARD ESS OF THE STATE OF REGISTRY, DIRECT Y OR  
INDIRECT Y OWNED, CHARTERED, EASED, OPERATED OR OTHERWISE  
CONTRO ED BY A PERSON CONNECTED WITH EITHER THE RUSSIAN  
FEDERATION OR OF BE ARUS OR BY A CORPORATION OR ENTITY THAT IS  
INCORPORATED OR FORMED UNDER THE AWS OF THE RUSSIAN FEDERATION  
OR BE ARUS, AND A OPERATORS HO DING AN AIR OPERATOR CERTIFICATE  
(AOC) ISSUED BY RUSSIAN FEDERATION AND/OR BE ARUSIAN AUTHORITIES  
ARE PROHIBITED TO ENTER, EXIT OR OVERF Y CANADA'S TERRITORIA  
AIRSPACE (INC UDING F T WITHIN 12NM OF CANADA'S COASTS).  
EXCEPTIONS PERMITTED FOR ACFT EXPERIENCING INF IGH T EMERG.

A AUTH OBTAINED PRIOR TO 27 FEB 2022 FOR ACFT AND OPS SUBJECT  
TO THIS NOTAM ARE REVOKED.

HUMANITARIAN, SAR, MEDEVAC AND ANY OTHER F T SEEKING AN EXCEPTION  
TO THIS RESTRICTION MUST RECEIVE AUTH GRANTED AFTER 27 FEB 2022  
FM THE MINISTER OF TRANSPORT TO OPERATE IN CANADA'S TERRITORIA  
AIRSPACE. AFFECTED ACFT WISHING TO OBTAIN SUCH AN AUTH OR C R  
INTO CANADA'S TERRITORIA AIRSPACE MAY APP Y TO THE MINISTER OF  
TRANSPORT AT 1-877-992-6853 OR 1-613-992-6853 OR BY EMAI AT  
OPERATIONS.AVIATION(AT)TC.GC.CA.)

(S5763/23 NOTAMN  
Q) CZVR/QFAX/IV/NB0/A/000/999/5353N12241W005  
A) CYXS B) 2301281322 C) 2301282122  
E) RSC 01/19 10 PCT ICE. VA ID JAN 28 1318 - JAN 28 2118.

RSC 06/24 30 PCT ICE. VA ID JAN 28 1319 - JAN 28 2119.

RSC 15 6/6/6 10 PCT ICE, 10 PCT ICE, 10 PCT ICE. ICE MAIN Y ON  
OUTER EDGES. VA ID JAN 28 1318 - JAN 28 2118.

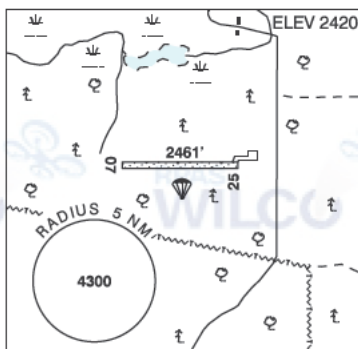
RSC 33 6/6/6 10 PCT ICE, 10 PCT ICE, 10 PCT ICE. ICE MAIN Y ON  
OUTER EDGES. VA ID JAN 28 1318 - JAN 28 2118.

ADDN NON-GRF/TA PA INFO:  
CRFI 01/19 NR.  
CRFI 06/24 NR.  
CRFI 15 NR/NR/NR.  
CRFI 33 NR/NR/NR.)

(F3992/22 NOTAMN  
Q) CZVR/QAT T/IV/NB0/E/000/999/4912N12311W999  
A) CZVR B) 2212081954 C) 2302081900EST  
E) IN SUPPORT OF CYVR CA FOR RE EASE PROGRAM:  
IFR ACFT DEP CYCD CYAZ CYXX CZBB CYHC CYPK CYWH CYNJ CAP3 CYB  
CYZT CYKA CY W AND CYFF DESTINED FOR CYVR ARE REQUIRED TO CTC  
TWR, FSS OR FIC BTN 30-90 MIN PRIOR TO DEP FOR AN APPROVED DEP  
TIME.  
IFR ACFT DEP CYYJ, CTC C EARANCE DE IVERY ON FREQ 126.4MHZ BTN  
30-90 MIN PRIOR TO DEP FOR AN APPROVED DEP TIME.  
IFR ACFT DEP CYQQ CYPW AND CAT4 DESTINED FOR CYVR ARE REQUIRED TO  
CTC CYQQ TERMINA 250-339-8115 BTN 30 AND 90 MIN PRIOR TO DEP FOR  
AN APPROVED DEP TIME.)

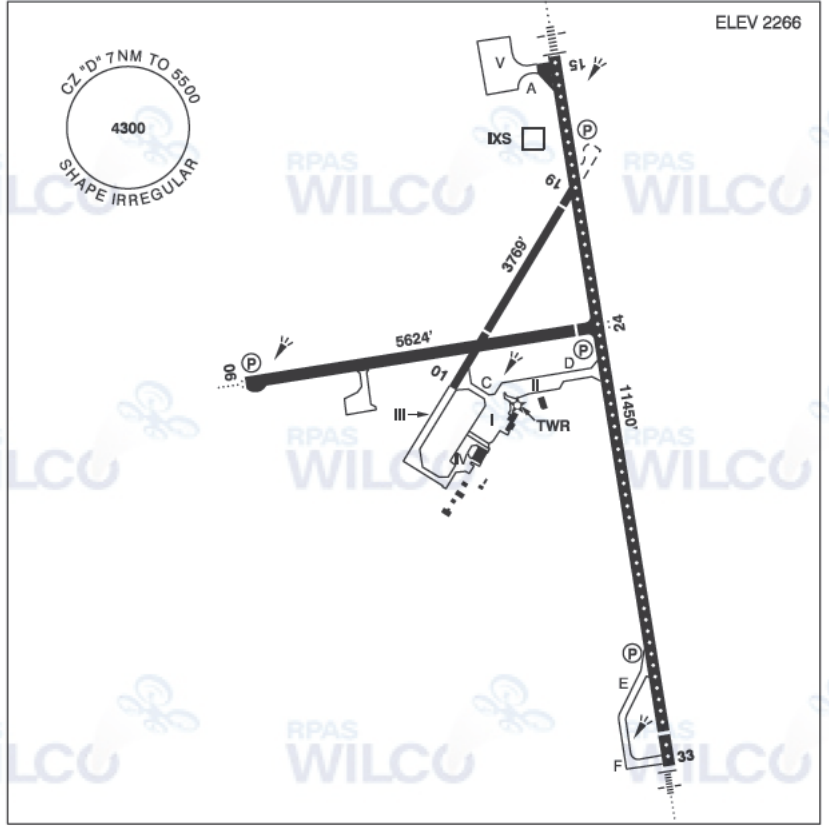
(R0016/23 NOTAMR R1516/22  
Q) CZVR/Q0 AS/IV/M/AE/000/026/5354N12242W005  
A) CYXS B) 2301070956 C) 2304051300EST  
E) OBST GT U/S TOWER 535413N 1224211W (APRX 1.48NM NW AD) 174FT  
AG , 2570FT AMS .)

<b>REF</b>	N53 51 20 W122 54 27 2.5N 19°E (2012) UTC-8(7) Elev 2420' A5014
<b>OPR</b>	Cyr's Recreational Avn Park 250-964-8228 or 250-617-8228 Reg
<b>PF</b>	B-1 C-2 D-3,4,5,6
<b>FLT PLN</b>	<b>FIC</b> Kamloops 866-WXBRIEF (Toll free within Canada) or 866-541-4101 (Toll free within Canada & USA)
<b>SERVICES</b>	<b>S</b> 2,4,5
<b>RWY DATA</b>	<b>RCR</b> Rwy 07(071°)/25(251°) 2461x50 gravel Opr Jun-Sep No win maint. Rwy soft in spring & fall.
<b>COMM</b>	<b>ATF</b> tfc 122.8 2NM 4000 ASL
<b>CAUTION</b>	Parajumping in area to 12,500 ASL by N rwy.



PRINCE GEORGE BC

CYXS



REF	N53 53 03 W122 40 39 2.8SE 18°E (2014) UTC-8(7) Elev 2266' A5014 LO1 H13 CAP
OPR	Prince George Airport Authority 250-963-2400 Cert
PF	A-1,2,3,6 C-4,5
CUST	AOE/30 (120 with staged off-loading) 888-226-7277 1630-0030Z±
FLT PLN	
FIC	Kamloops 866-WXBRIEF (Toll free within Canada) or 866-541-4101 (Toll free within Canada & USA)
WX	METAR AUTO H24 (see COMM). TAF H24, issue times: 01, 07, 13, 19Z. WxCam
SERVICES	
FUEL	100LL, JA-1 (FSII avbl), F-34, JB, HPR
OIL	All
S	1,2,3,4
ARFF	DESIGNATED CAT 7 1400-0730Z± sked pax flt only, O/T call out chg, 2 hr PN, aprt clsd to acft 20 seats & abv, exc for diversions or as an altn A/D without PPR.
PVT ADV	Jetmark 129.4 250-961-8124
MIL CON	PetroValue Products Canada Inc. 604-576-0004

BRITISH COLUMBIA

AERODROME/FACILITY DIRECTORY

PRINCE GEORGE BC (Cont'd)

CYXS

RWY DATA	Rwy 15(153°)/33(333°) 11450x150 asphalt Thld 33 displ 500' Rwy 15 down 0.3% Rwy 06(063°)/24(243°) 5624x150 asphalt Thld 24 displ 401'. Rwy 24 up 0.87% Rwy 01(013°)/19(193°) 3769x75 asphalt Thld 01 displ 984'. Thld 19 displ 373'
RWY CERT	Rwy 15 RVR 1200(1/4sm)/Rwy 33 RVR 1200(1/4sm) AGN V Rwy 06/24 AGN IIIB Rwy 01/19 AGN II
TWY CERT	Twy: C, D AGN IV
RCR	Opr 1300-0730Z±. Rwy 01/19 rstd to 12,500 lbs for ldg & tkof day only. Win maint 1300-0730Z± O/T 2hr PN cost recovery. CRFI, PLR/PCN.
LIGHTING	06-AO(TE ME) P2, 24-AS(TE ME) P2, 15-AN(TE HI CL) P3, 33-AN(TE HI CL) P2 PAPI limitation/restriction. PAPI Rwy 24 to be used only within 5NM of thld ARCAL-118.3 type K when twr clsd Rwys 01/19 lit as twy
COMM	
RCO	Williams Lake rdo 118.3 (RAAS) 07-14Z± Pacific rdo 123.55 (FISE) 126.7 (bcst)
ATIS	128.725 14-07Z±
GND	121.9 14-07Z±
TWR	118.3 (V) 14 -07Z± (emerg only 250-963-9177)
MF	Williams Lake rdo 118.3 07-14Z± CZ shape irregular 7NM 5500 ASL (CAR 602.98) (emerg only 250-989-4415)
PAL	Vancouver Ctr 133.8
AWOS	128.725 07-14Z±
NAV	
VOR/DME	YXS 112.3 Ch 70 N53 53 39 W122 27 20 (4076') Scalloping may be experienced on all radials from 20-60NM
DME	IXS 109.5 Ch 32 N53 53 46 W122 40 19 (2260')
ILS	IXS 109.5 (Rwy 15) RVR LOC reliable only within 10° either side of centreline.
PRO	Rgt hand circuits Rwys 19, 24 & 33 (CAR 602.96).
CAUTION	Tall vehicles crossing 910' N thld Rwy 15. Extv bird activity dur spring & fall. Parajumping activity vic Beaverley A/D 8NM SW to 12,500 ASL by NOTAM, monitor 122.1. Radiosonde balloon launches with an ascent rate of 1000 ft/min daily between the hours of 1115-1345Z & 2315-0145Z. Hi terrain reduces operational length of Rwy 24 PAPI.